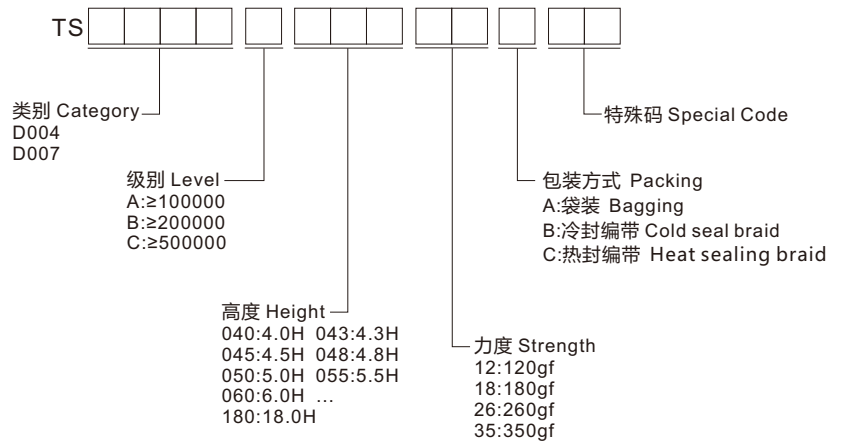


## ◆ 选型 Type Selection



## ◆ 规格 Specifications

- 使用温度 Operating temperature : -20°C~+80°C
- 最大额定值 Maximum rating : 50mA 12V DC
- 最小额定值 Minimum rating : 10μA 1V DC
- 接触电阻 Contact resistance : ≤100mΩ
- 绝缘电阻 Insulation resistance : ≥100MΩ
- 耐电压 Withstand voltage : 250V AC

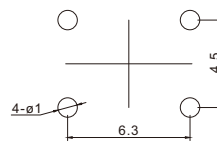
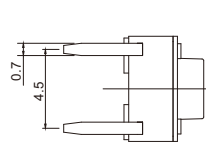
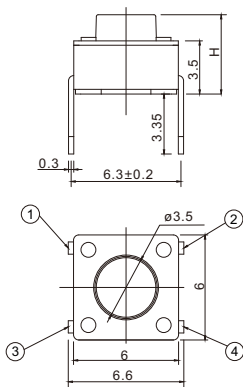
## ◆ 材质 Material

- 接触点 Contact point : 铜合金 Copper alloy
- 本体 Ontology : PPA/LCP
- 弹片 shrapnel : 不锈钢 Stainless steel
- 盖板 Cover : 铁/铜合金 Iron/copper alloy
- 按钮 Button : PPA/LCP

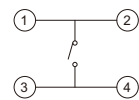
## ◆ 图表 Diagram

### ■ TS-D004

H	
4.3	4.5
5.0	5.5
6.0	6.5
7.0	7.5
8.0	8.5
9.0	9.5
10.0	



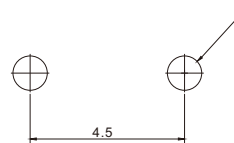
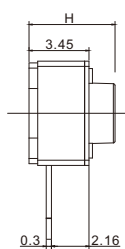
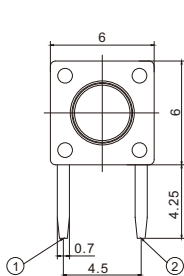
安装图  
instructions



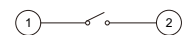
电路图  
Circuit diagram

### ■ TS-D007

H	
4.1	4.3
4.5	5.0
5.5	6.0
6.5	7.0
7.5	8.0
8.5	9.0
9.5	10.0



安装图  
instructions



电路图  
Circuit diagram