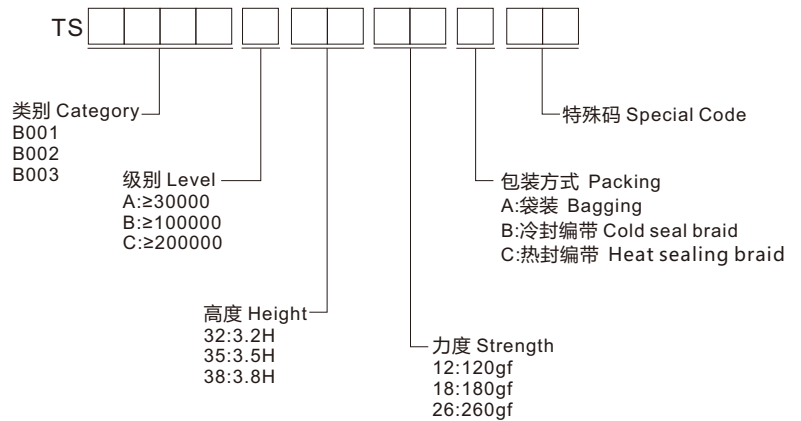


◆ 选型 Type Selection



◆ 规格 Specifications

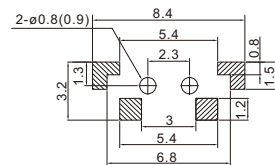
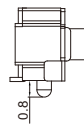
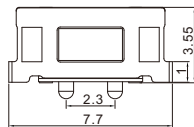
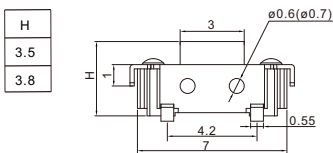
- 使用温度 Operating temperature: -20°C ~ +80°C
- 最大额定值 Maximum rating: 50mA 12V DC
- 最小额定值 Minimum rating: 10μA 1V DC
- 接触电阻 Contact resistance: ≤100mΩ
- 绝缘电阻 Insulation resistance: ≥100MΩ
- 耐电压 Withstand voltage: 250V AC

◆ 材质 Material

- 接触点 Contact point: 铜合金 Copper alloy
- 本体 Ontology: PPA/LCP
- 弹片 Shrapnel: 不锈钢 Stainless steel
- 盖板 Cover: 铜合金 copper alloy
- 按钮 Button: PPA/LCP

◆ 图表 Diagram

■ TS-B001

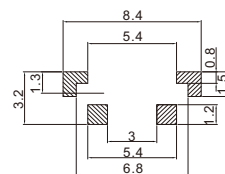
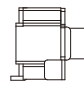
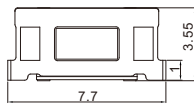
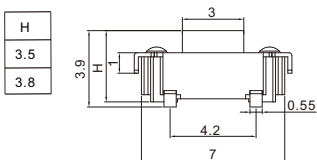


安装图
instructions



电路图
Circuit diagram

■ TS-B002

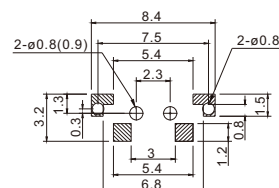
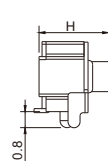
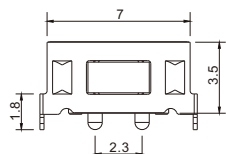
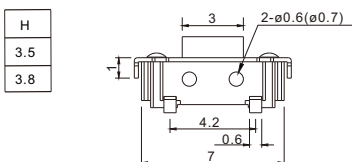


安装图
instructions



电路图
Circuit diagram

■ TS-B003



安装图
instructions



电路图
Circuit diagram