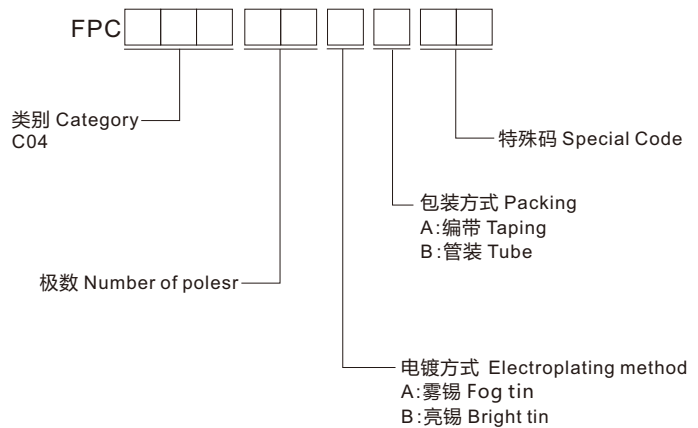
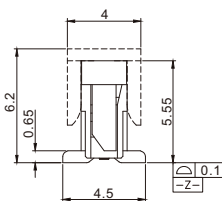
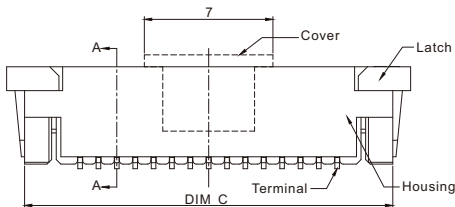
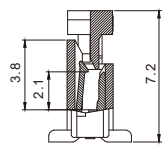
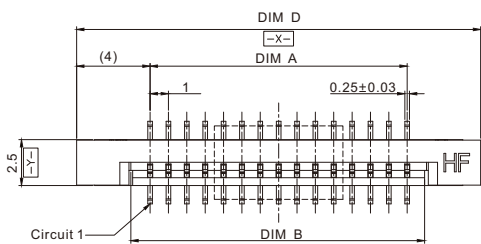


## ◆ 选型 Type Selection



## ◆ 图表 Diagram

### ■ 1.0立式正脚H=2.5



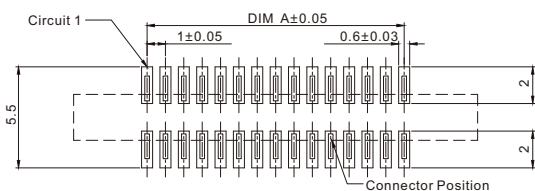
## ◆ 规格 Specifications

- 极数 Number of poles: 4~40
- 工作温度 Working Temperature: -40°C~+85°C
- 额定电压 (最大) Voltage rating(max): 1250V,AC
- 接触电阻 Contact resistance: ≤0.02Ω
- 绝缘电阻 Insulation resistance: ≥100MΩ
- 目前评级 Current rating: 1.0A
- 耐压 Withstand voltage: 250VAC(rms)

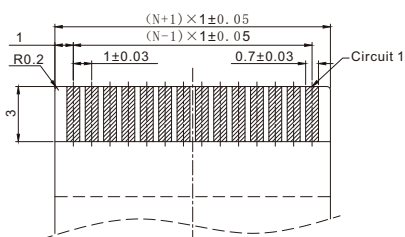
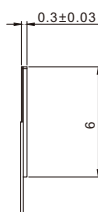
## ◆ 材质 Material

- 端子 Terminal: 铜合金 Copper Alloy
- 外壳 Housing: LCP

CKTS	尺寸 Size(mm)			
	DIM A	DIM B	DIM C	DIM D
4	3.00	5.10	9.05	11.00
5	4.00	6.10	10.05	12.00
6	5.00	7.10	11.05	13.00
7	6.00	8.10	12.05	14.00
8	7.00	9.10	13.05	15.00
9	8.00	10.10	14.05	16.00
10	9.00	11.10	15.05	17.00
	.....	.....	.....	.....



RECOMMENDED P.C.B. PATTERN LAYOUT



RECOMMENDED FPC/FFC DIMENSION