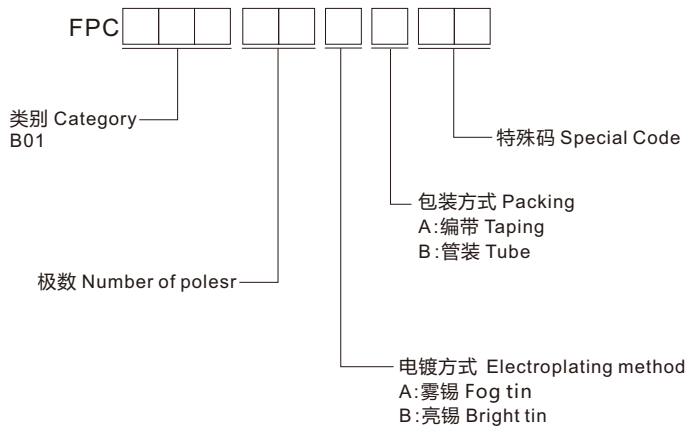
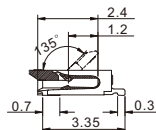
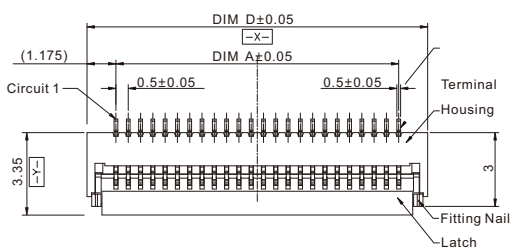


## ◆ 选型 Type Selection



## ◆ 图表 Diagram

■ 0.5掀盖下接H=1.0

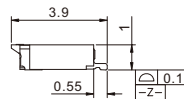
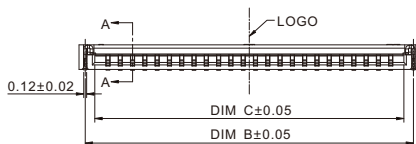


## ◆ 规格 Specifications

- 极数 Number of polesr : 4~50
- 工作温度 Working Temperature : -40°C~+85°C
- 额定电压 (最大) Voltage rating(max) : 1250V,AC
- 接触电阻 Contact resistance :  $\leq 0.02\Omega$
- 绝缘电阻 Insulation resistance :  $\geq 100M\Omega$
- 目前评级 Current rating : 1.0A
- 耐压 Withstand voltage : 250VAC(rms)

## ◆ 材质 Material

- 端子 Terminal : 铜合金 Copper Alloy
- 外壳 Housing : LCP



CKTS	尺寸 Size(mm)					
	DIM A	DIM B	DIM C	DIM D	DIM E	DIM F
4	1.50	3.35	2.57	3.85	3.10	3.90
5	2.00	3.85	3.07	4.35	3.60	4.40
6	2.50	4.35	3.57	4.85	4.10	4.90
7	3.00	4.85	4.07	5.35	4.60	5.40
8	3.50	5.35	4.57	5.85	5.10	5.90
9	4.00	5.85	5.07	6.35	5.60	6.40
10	4.50	6.35	5.57	6.85	6.10	6.90
.....	.....	.....	.....	.....	.....	.....

