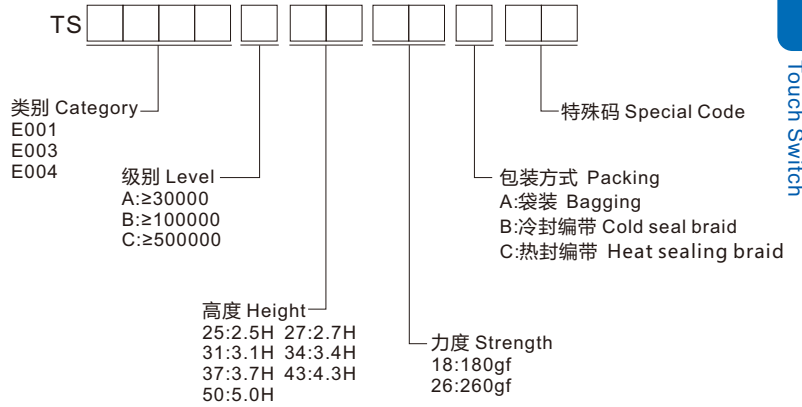


◆ 选型 Type Selection



◆ 规格 Specifications

- 使用温度 Operating temperature : -20°C~+80°C
- 最大额定值 Maximum rating : 50mA 12V DC
- 最小额定值 Minimum rating : 10μA 1V DC
- 接触电阻 Contact resistance : ≤100mΩ
- 绝缘电阻 Insulation resistance : ≥100MΩ
- 耐电压 Withstand voltage : 250V AC

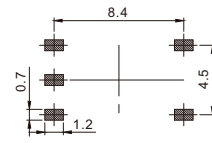
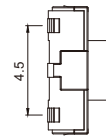
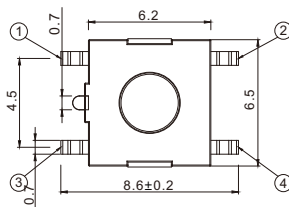
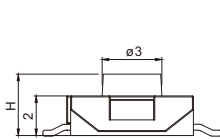
◆ 材质 Material

- 接触点 Contact point : 铜合金 Copper alloy
- 本体 Ontology : PPA/LCP
- 弹片 shrapnel : 不锈钢 Stainless steel
- 盖板 Cover : 铁/铜合金 Iron/copper alloy 不锈钢 Stainless steel
- 按钮 Button : PPA/LCP

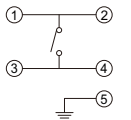
◆ 图表 Diagram

■ TS-E001

H	
2.1	2.5
3.1	3.5
5.0	



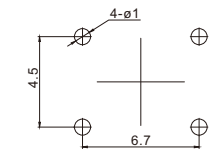
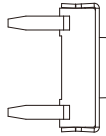
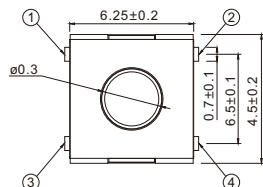
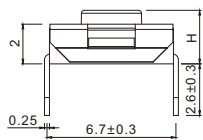
安装图
instructions



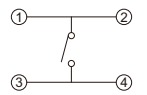
电路图
Circuit diagram

■ TS-E003

H	
2.5	2.7
3.1	3.4
3.7	3.8
4.3	5.0



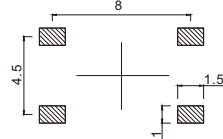
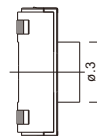
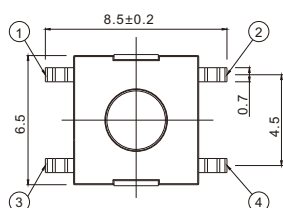
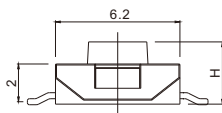
安装图
instructions



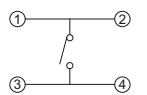
电路图
Circuit diagram

■ TS-E004

H	
2.5	3.1
3.5	4.0



安装图
instructions



电路图
Circuit diagram