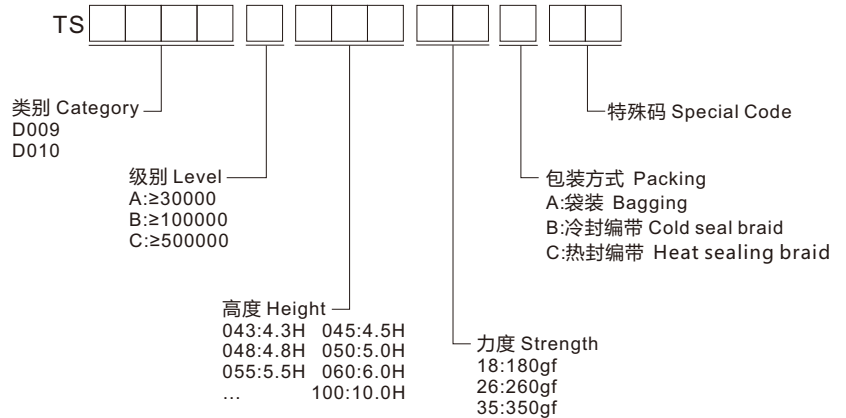


◆ 选型 Type Selection



◆ 规格 Specifications

- 使用温度 Operating temperature : -20°C~+80°C
- 最大额定值 Maximum rating : 50mA 12V DC
- 最小额定值 Minimum rating : 10μA 1V DC
- 接触电阻 Contact resistance : ≤100mΩ
- 绝缘电阻 Insulation resistance : ≥100MΩ
- 耐电压 Withstand voltage : 250V AC

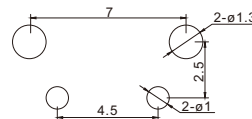
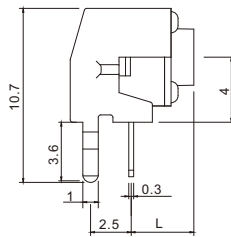
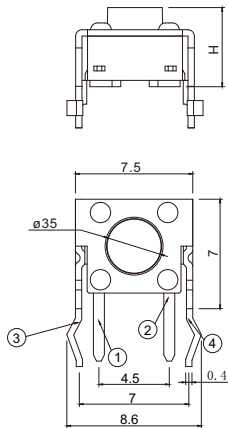
◆ 材质 Material

- 接触点 Contact point : 铜合金 Copper alloy
- 本体 Ontology : PPA/LCP
- 弹片 Shrapnel : 不锈钢 Stainless steel
- 盖板 Cover : 铁/铜合金 Iron/copper alloy
- 按钮 Button : PPA/LCP

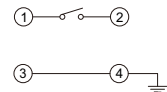
◆ 图表 Diagram

■ TS-D009

| L | H |
|------|------|
| 3.15 | 4.3 |
| 3.35 | 4.5 |
| 3.85 | 5.0 |
| 4.35 | 5.5 |
| 4.85 | 6.0 |
| 5.35 | 6.5 |
| 5.85 | 7.0 |
| 6.35 | 7.5 |
| 6.85 | 8.0 |
| 7.35 | 8.5 |
| 7.85 | 9.0 |
| 8.35 | 9.5 |
| 8.85 | 10.0 |



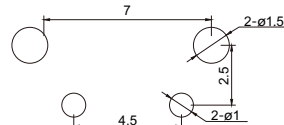
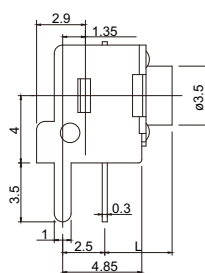
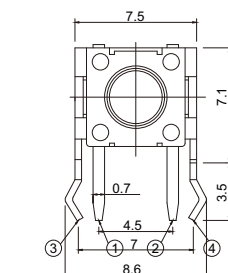
安装图
instructions



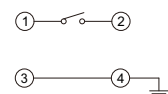
电路图
Circuit diagram

■ TS-D010

| L | H |
|-------|-------|
| 3.15 | 4.3 |
| 3.35 | 4.5 |
| 3.85 | 5.0 |
| 4.35 | 5.5 |
| 4.85 | 6.0 |
| 5.35 | 6.5 |
| 5.85 | 7.0 |
| 6.35 | 7.5 |
| 6.85 | 8.0 |
| 7.35 | 8.5 |
| 7.85 | 9.0 |
| 8.35 | 9.5 |
| | |



安装图
instructions



电路图
Circuit diagram