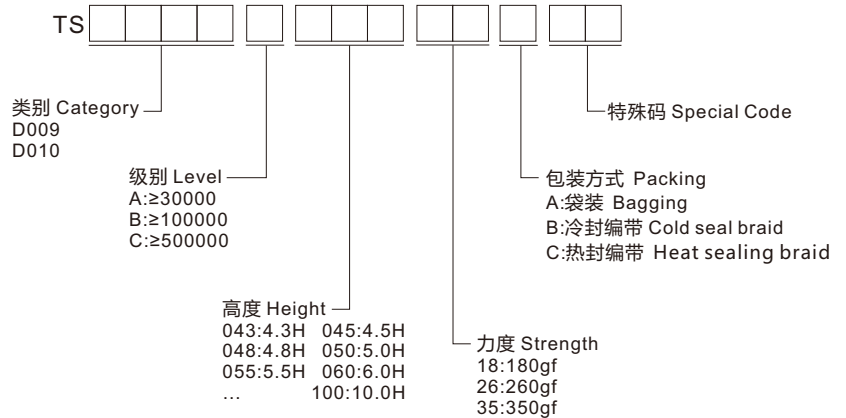


◆ 选型 Type Selection



◆ 规格 Specifications

- 使用温度 Operating temperature : -20°C~+80°C
- 最大额定值 Maximum rating : 50mA 12V DC
- 最小额定值 Minimum rating : 10μA 1V DC
- 接触电阻 Contact resistance : ≤100mΩ
- 绝缘电阻 Insulation resistance : ≥100MΩ
- 耐电压 Withstand voltage : 250V AC

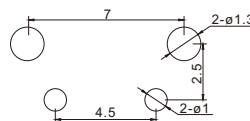
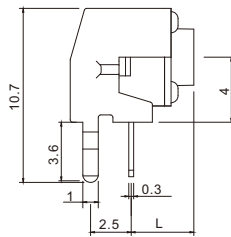
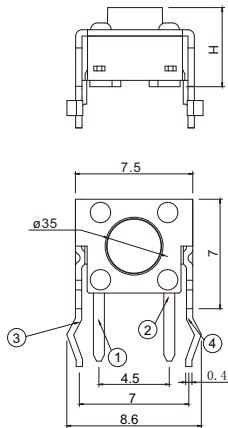
◆ 材质 Material

- 接触点 Contact point : 铜合金 Copper alloy
- 本体 Ontology : PPA/LCP
- 弹片 Shrapnel : 不锈钢 Stainless steel
- 盖板 Cover : 铁/铜合金 Iron/copper alloy
- 按钮 Button : PPA/LCP

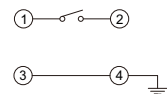
◆ 图表 Diagram

■ TS-D009

L	H
3.15	4.3
3.35	4.5
3.85	5.0
4.35	5.5
4.85	6.0
5.35	6.5
5.85	7.0
6.35	7.5
6.85	8.0
7.35	8.5
7.85	9.0
8.35	9.5
8.85	10.0



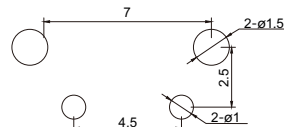
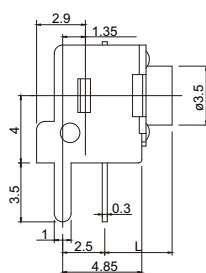
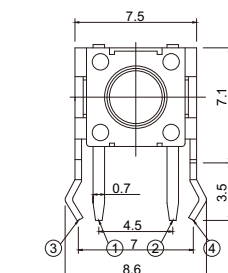
安装图
instructions



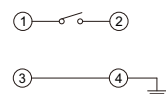
电路图
Circuit diagram

■ TS-D010

L	H
3.15	4.3
3.35	4.5
3.85	5.0
4.35	5.5
4.85	6.0
5.35	6.5
5.85	7.0
6.35	7.5
6.85	8.0
7.35	8.5
7.85	9.0
8.35	9.5
.....



安装图
instructions



电路图
Circuit diagram